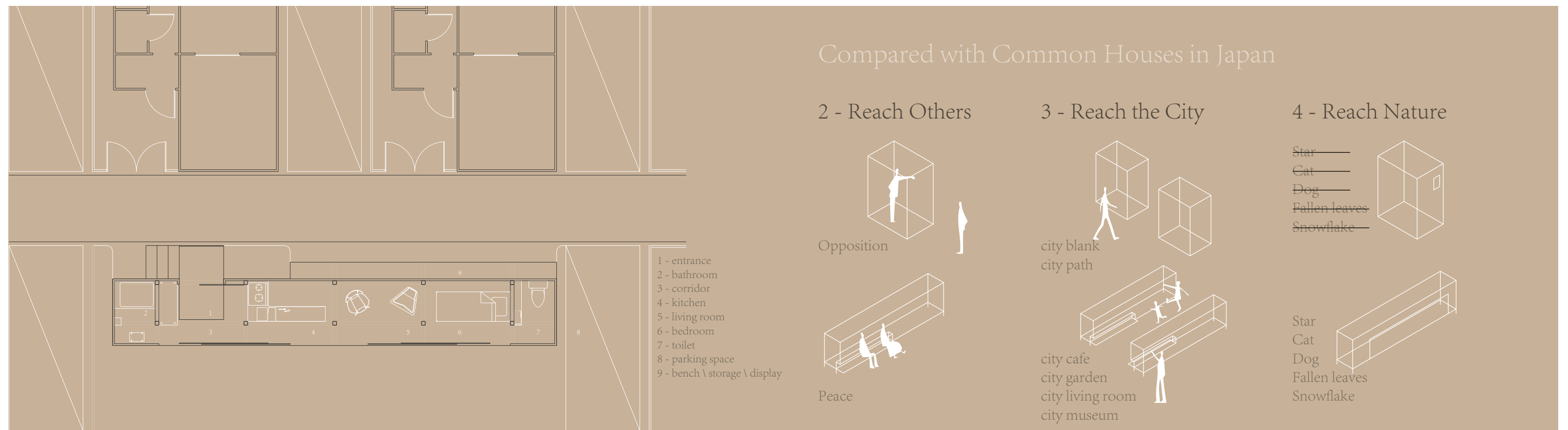


# 触れられる家 Reachable Home



1

私はNHKの「家、ついて行ってイイですか?」という番組に憧れて、住宅の中に隠されている話が気になる。社会との接触を拒み、部屋には雑貨やゴミがたまっていて、生活するよりも、その場で息をしているような集団に気がついた。

I'm fond of the program "Follow Your Home" of NHK very much and curious about the story hidden in the house. Gradually, I began to notice a group who refused to socialize, filled their rooms with clutter or garbage, and were more likely to stay put and breathe than to live.

2

私はある群体を気いた。この人たちが苦しくて、しびれを切らして、まるでカフカの『変身』で書いている甲虫のよう、移動範囲も家の中に限られていた。家は、人々の避難所から、人々と社会との接触を遮断する最後の障壁となり、家は、彼らの甲虫の殻となってしまった。

They are pained and numb like beetles in Kafka's The Metamorphosis who confined to their homes. Home has become their shelter from being a refuge to being the last barrier between people and society.

3

現代資本社会における決壊した欲望と不毛な現実との間に存在する大きな落差が、このような状況を今日の日本、そして世界にもたらしている。建築家として、私はこれらの殻に閉じ込められて彷徨う魂のために用意した家、触れられる家、社会であろうと自然であろうと、直面していない自分に触れることができる

The huge gap makes the desire to breach the levees and the barren reality of modern capitalist society, resulting in such situation play out in Japan and the world today. As an architect, I would like to present these lost and wandering souls in empty shells a reachable home, so that they can embrace what they have never encountered before whether in the society, nature or themselves.

## 1 - Reach the Heart

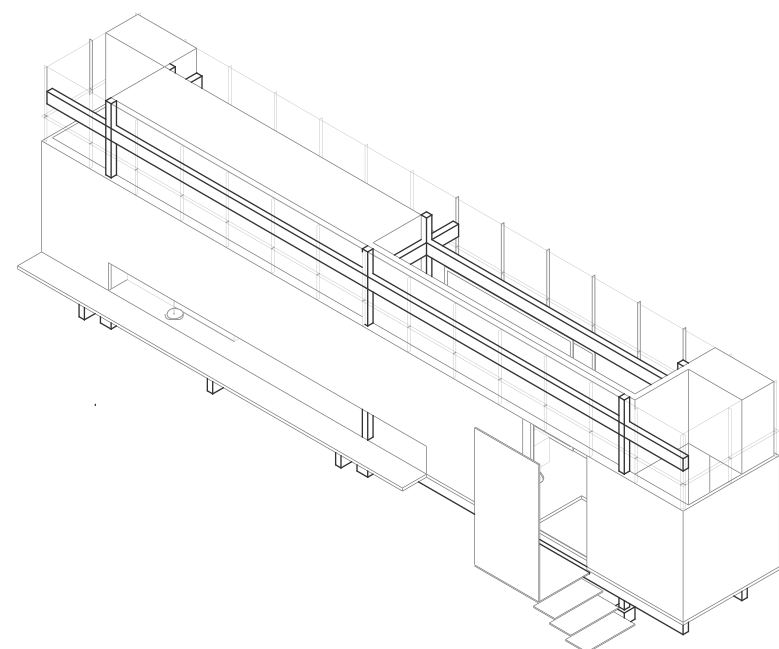
Design Concept



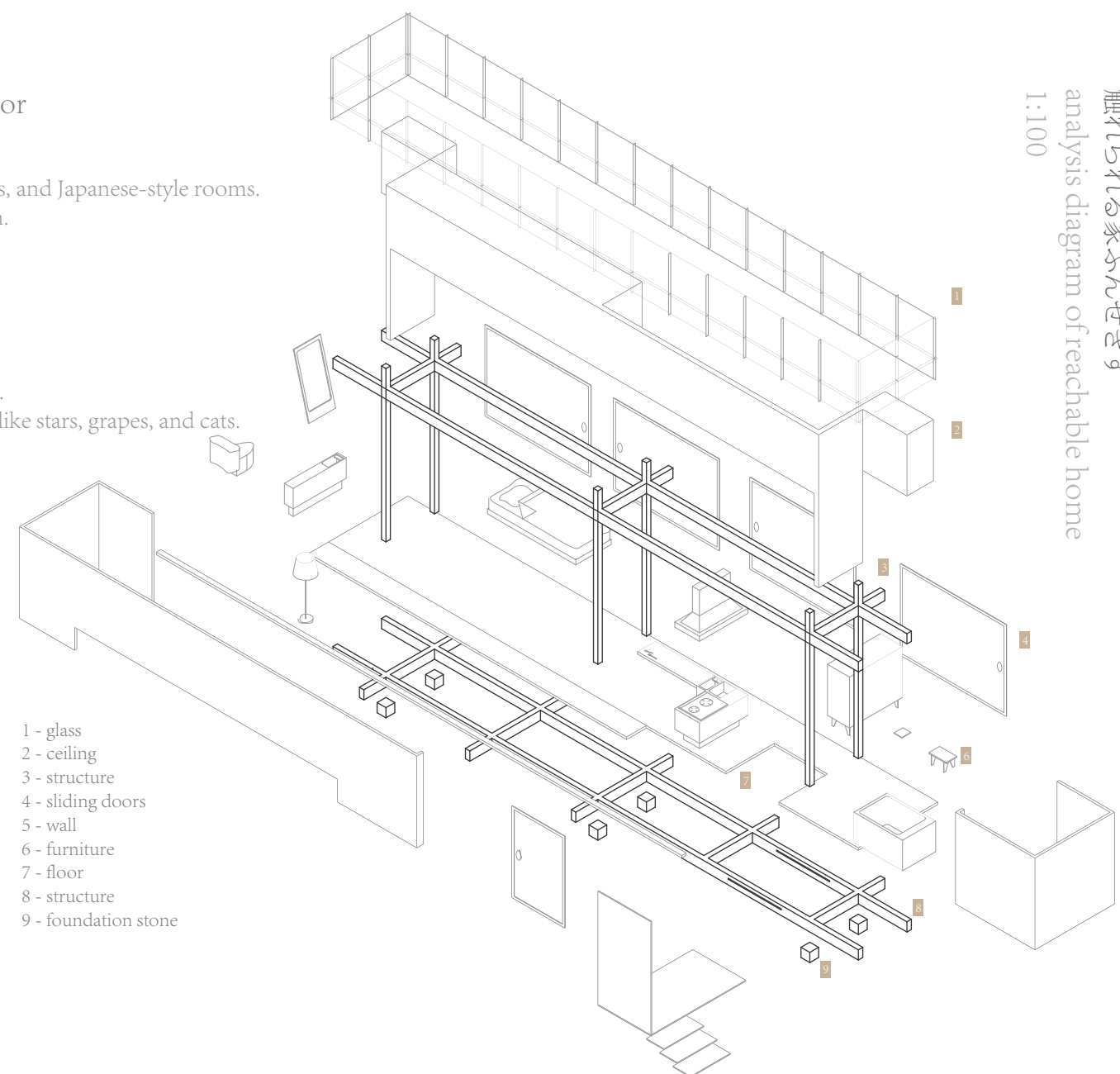
Common Japanese houses are connected by corridors, kitchens, toilets, western-style rooms, and Japanese-style rooms. But this feature let lonely people take the chance to fill up one room and go to another room. Gradually, the situation got worse and worse.

My design is to integrate the corridor with various functions, the room is a corridor, and the corridor is also a room.

The long and narrow space prevents people from hoarding debris in order to fill their hearts. Only in this way can people touch the outside world and fill they heart with beautiful things like stars, grapes, and cats.



触れられる家軸測図  
1:100  
axonometric diagram of reachable home

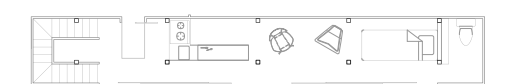


- 1 - glass
- 2 - ceiling
- 3 - structure
- 4 - sliding doors
- 5 - wall
- 6 - furniture
- 7 - floor
- 8 - structure
- 9 - foundation stone

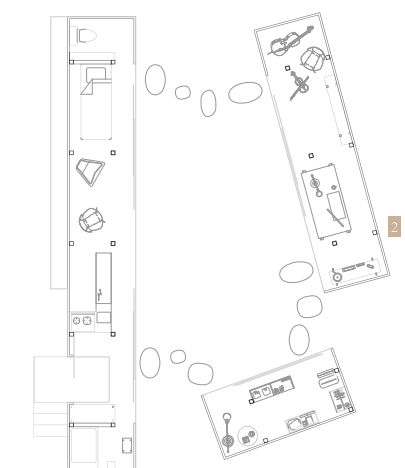
触れられる家ぶんせきず  
1:100  
analysis diagram of reachable home

## 5 - Reach the Future

provide multiple options for the future



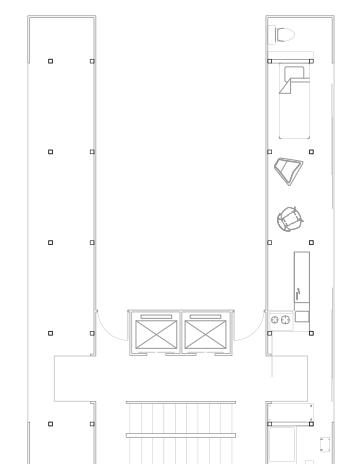
multi-storey house  
1st floor plan  
1:200



When more space demand, it can be built upwards without losing the courtyard area.

family residence installments plan  
1st floor plan  
1:200

When get married and have a family, expand the space by modules, which is also applicable to installment loans.



collective house ski hotel  
1st floor plan  
1:200

When the land conditions are changed, two or even multiple units can be connected by adding a staircase elevator to become a collective housing or a hotel.